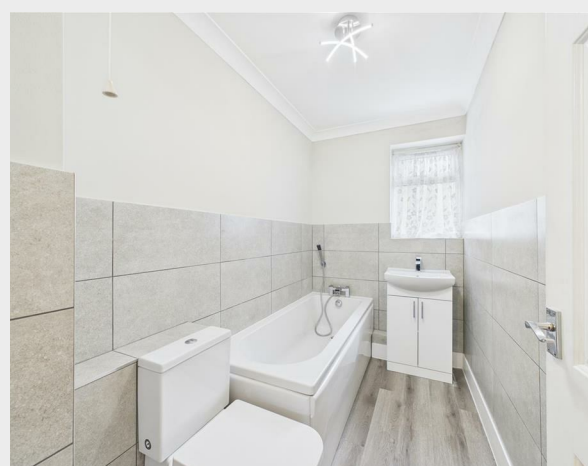


9 Seacliffe, South Coast Road, Telscombe Cliffs,  
Peacehaven, BN10 7AE  
Leasehold





Situated conveniently along the South Coast Road in Telscombe Cliffs, Peacehaven, this spacious two-bedroom ground floor flat offers modern decoration throughout and a west facing patio too. The property is well presented, featuring a bright and airy west-facing lounge that invites an abundance of natural light, creating a warm and welcoming atmosphere.

The well-maintained kitchen is thoughtfully designed, providing an ideal space for culinary enthusiasts to prepare meals and entertain guests. The newly fitted bathroom adds a touch of contemporary elegance, ensuring that your daily routines are both stylish and functional.

Both bedrooms are doubles and offer ample space for relaxation, making them a perfect retreat at the end of a busy day. With its excellent location, this flat is within walking distance to transport links, providing easy access to the cities of Brighton and Eastbourne.

A further feature of this super apartment is the west facing patio, perfect to relax into the evening.

This property is an excellent opportunity for those seeking a comfortable home in a desirable area, combining modern living with the charm of coastal life. Whether you are looking to downsize or for your first home, this flat is sure to impress.



**206 South Coast Road  
Peacehaven**

**East Sussex**

**BN10 8JP**

**01273 830 987**

**bnsales@localagent.co.uk**

**www.openhousebrighton.co.uk**

## Living Room

15'1" x 12'1" (4.6 x 3.7)

## Kitchen

8'7" x 6'0" (2.62 x 1.83)

## Bedroom One

11'11" x 12'11" (3.64 x 3.95)

## Bedroom Two

11'7" x 7'7" (3.54 x 2.32)

## Bathroom/wc

