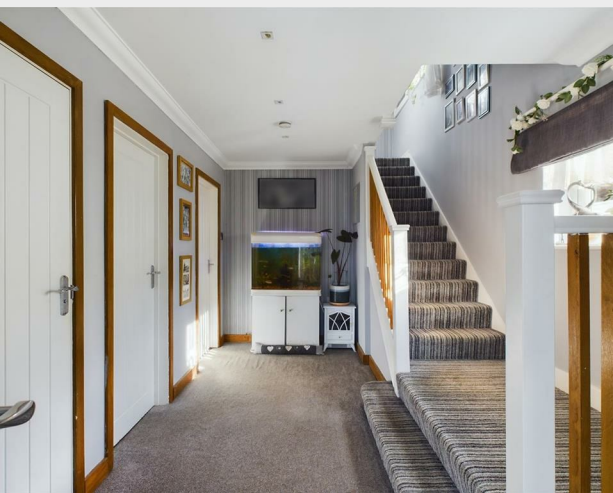
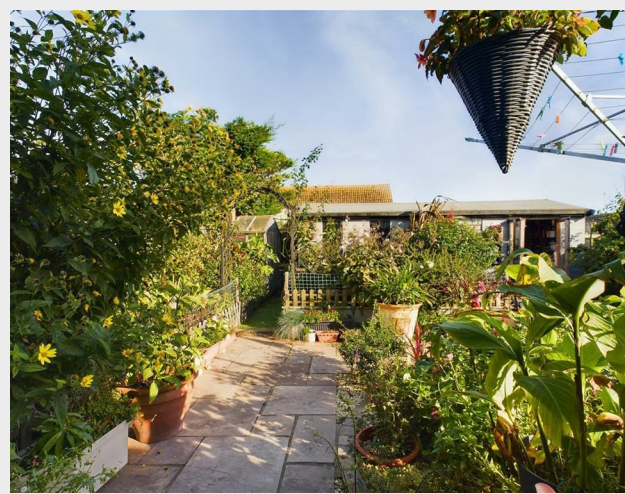


Rowe Avenue North, Peacehaven, BN10 7QP  
Non-traditional  
65% Shared Ownership £269,750





Nestled in the heart of Peacehaven on Rowe Avenue North, this charming house offers a fantastic opportunity for a new family home. Boasting a spacious lounge/dining room, a well-fitted kitchen, and four generously sized bedrooms, this property is perfect for those seeking comfort and style.

With both a bathroom and a shower room, convenience is key in this superbly presented family home. The landscaped rear garden, complete with a delightful summer house, provides a tranquil escape from the hustle and bustle of everyday life.

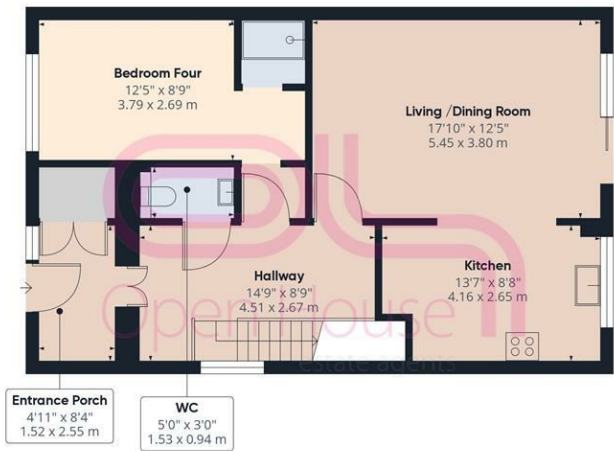
Furthermore, the convenience of off-road parking for two vehicles adds to the appeal of this residence, making it a practical choice for those with a busy lifestyle. Don't miss out on the chance to make this centrally located gem your own!

Please note there will be rent payable on the 35% share retained by Orbit Housing Association.

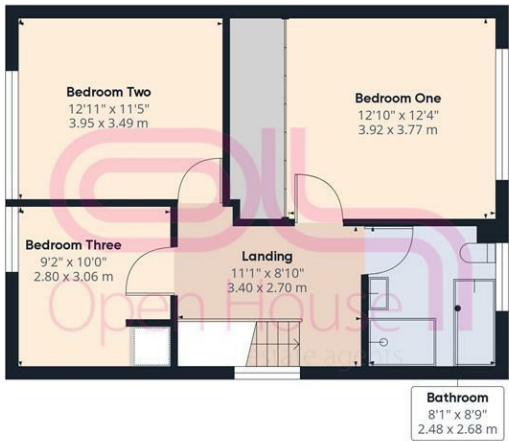


206 South Coast Road  
Peacehaven  
East Sussex  
BN10 8JP  
01273 830 987  
bnsales@localagent.co.uk

www.openhousebrighton.co.uk



Ground Floor



Floor 1



Approximate total area<sup>1</sup>  
1300.39 ft<sup>2</sup>  
120.81 m<sup>2</sup>

(1) Excluding balconies and terraces

While every attempt has been made to ensure accuracy, all measurements are approximate, not to scale. This floor plan is for illustrative purposes only.

Calculations are based on RICS IPMS 3C standard.

GIRAFFE360

