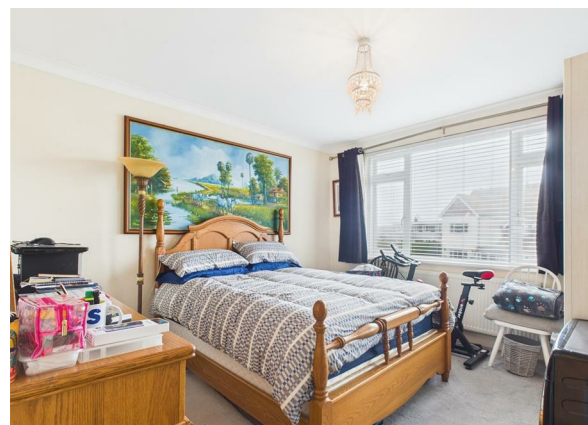
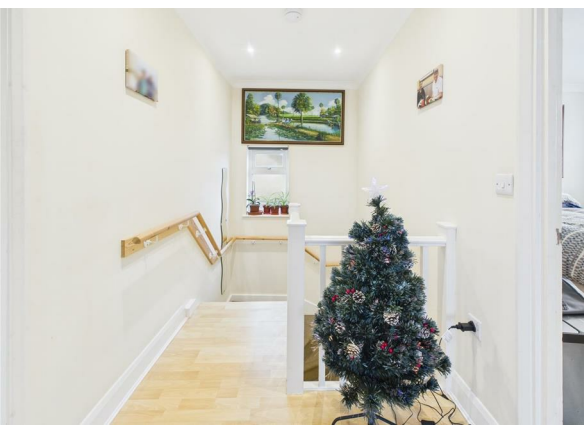


Flat 2, South Coast Road, Peacehaven, BN10 8SU

Asking Price £210,000

Council Tax Band: A



This CHARMING first-floor maisonette offers a DELIGHTFUL blend of comfort and modern living. With its OWN PRIVATE ENTRANCE, this property welcomes you into a SPACIOUS and INVITING home that is perfect for both relaxation and entertaining.

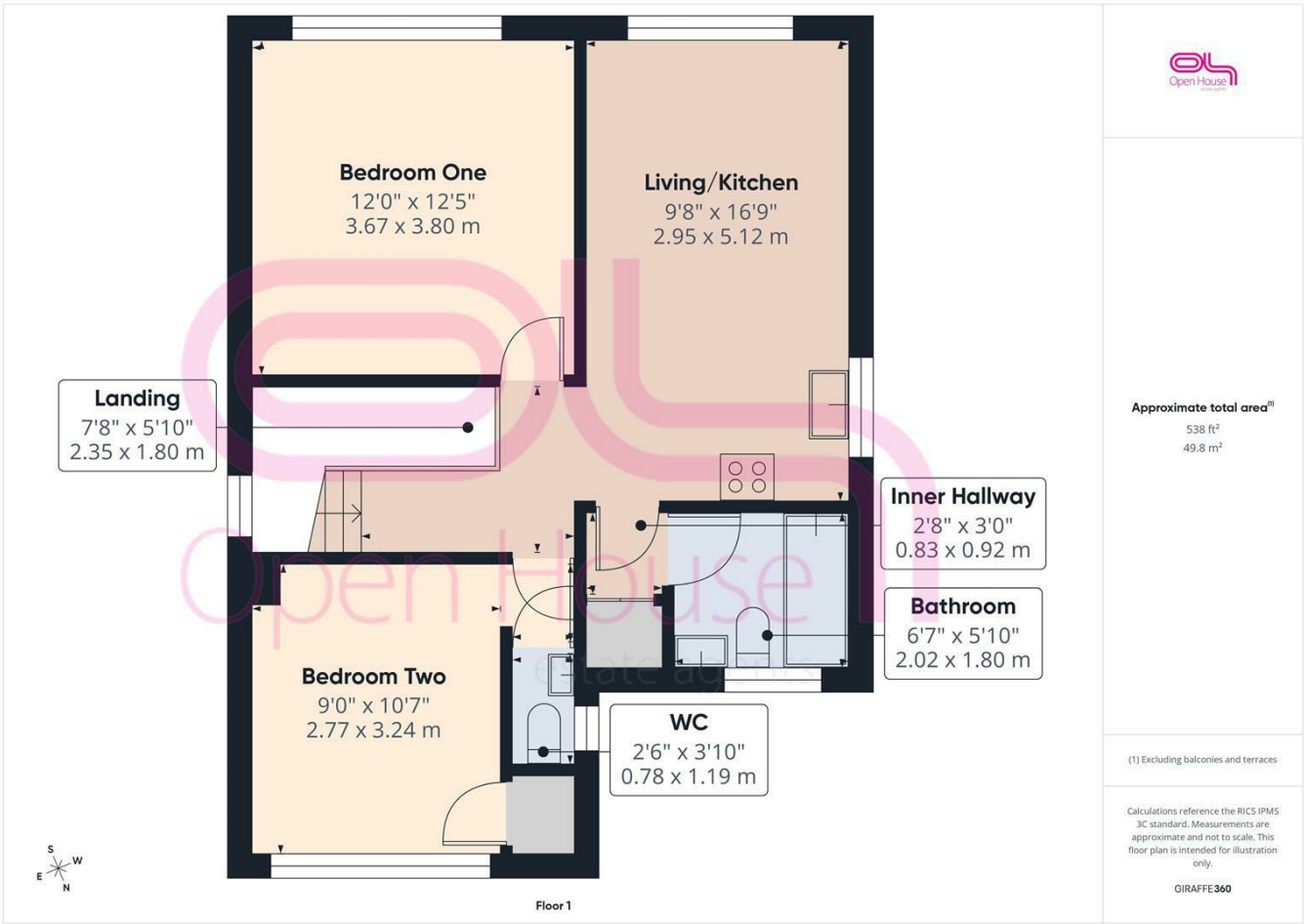
The maisonette features two generously sized double bedrooms, providing ample space for rest and relaxation. The contemporary open-plan living and kitchen area is designed to maximise light and space, creating a warm and welcoming atmosphere. This layout is ideal for those who enjoy hosting friends and family, as it allows for seamless interaction between the living and dining spaces.

Convenience is key, and this property boasts excellent transport links, making it easy to explore the surrounding areas or commute to nearby towns. Additionally, the maisonette comes with a share of the freehold, offering a sense of security and investment in your property.

Whether you are a first-time buyer or looking to downsize, this maisonette on South Coast Road presents a wonderful opportunity to enjoy coastal living in a vibrant community. With its modern features and prime location, it is sure to appeal to a variety of buyers seeking a comfortable and stylish home.



206 South Coast Road, Peacehaven, East
Sussex, BN10 8JP
01273 830 987
bnsales@localagent.co.uk



Energy Efficiency Rating		
	Current	Potential
Very energy efficient - lower running costs		
(92 plus) A		
(81-91) B		
(69-80) C		
(55-68) D	71	76
(39-54) E		
(21-38) F		
(1-20) G		
Not energy efficient - higher running costs		
England & Wales	EU Directive 2002/91/EC	