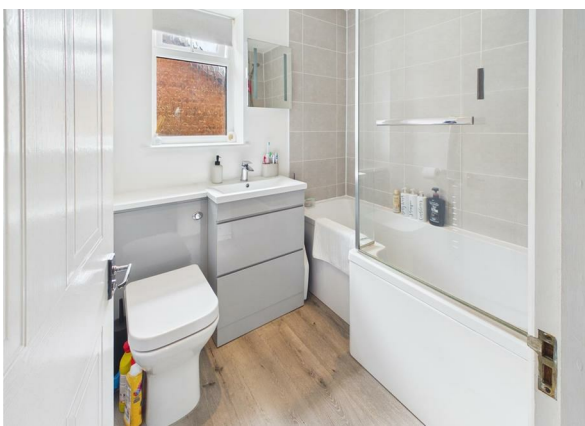


Anderson Close, Newhaven, BN9 9XY
Asking Price £319,950



Anderson Close, Newhaven, BN9 9XY

Asking Price £319,950
Council Tax Band: C

Situated in the sought-after area of Anderson Close, Newhaven, this stunning extended semi-detached house offers a perfect blend of modern living and tranquil surroundings. One of the stand out features of this superb home is the extended ground floor open plan kitchen/living/Dining room. This is a fantastic multi-use space, ideal for both entertaining and family life.

Stairs then lead up to the first floor level where you can find the bright and spacious main living area which has patio doors leading out to the rear.

Presented in excellent decorative order throughout, this home features two generously sized double bedrooms, providing ample space for relaxation and rest. The modern family bathroom is designed with style and functionality in mind, ensuring comfort for all residents.

There are also open views to the front, which enhance the sense of space and light. The tiered back garden, which backs onto picturesque farmland, offers a serene outdoor retreat, perfect for enjoying the beauty of nature or hosting summer gatherings.

Although there are no on road parking restrictions, this property also has its own driveway which offers parking for two vehicles.

This delightful home is not only a wonderful place to live but also situated in a popular residential location, making it an ideal choice for families and professionals alike. With its modern amenities and charming surroundings, this property is sure to impress. Don't miss the opportunity to make this beautiful house your new home.

Entrance Hallway

Kitchen/Living/Dining Room

16'5" x 15'9" (5.02 x 4.81)

Stairs to First Floor

Living Room

16'6" x 11'6" (5.05 x 3.52)

Bedroom One

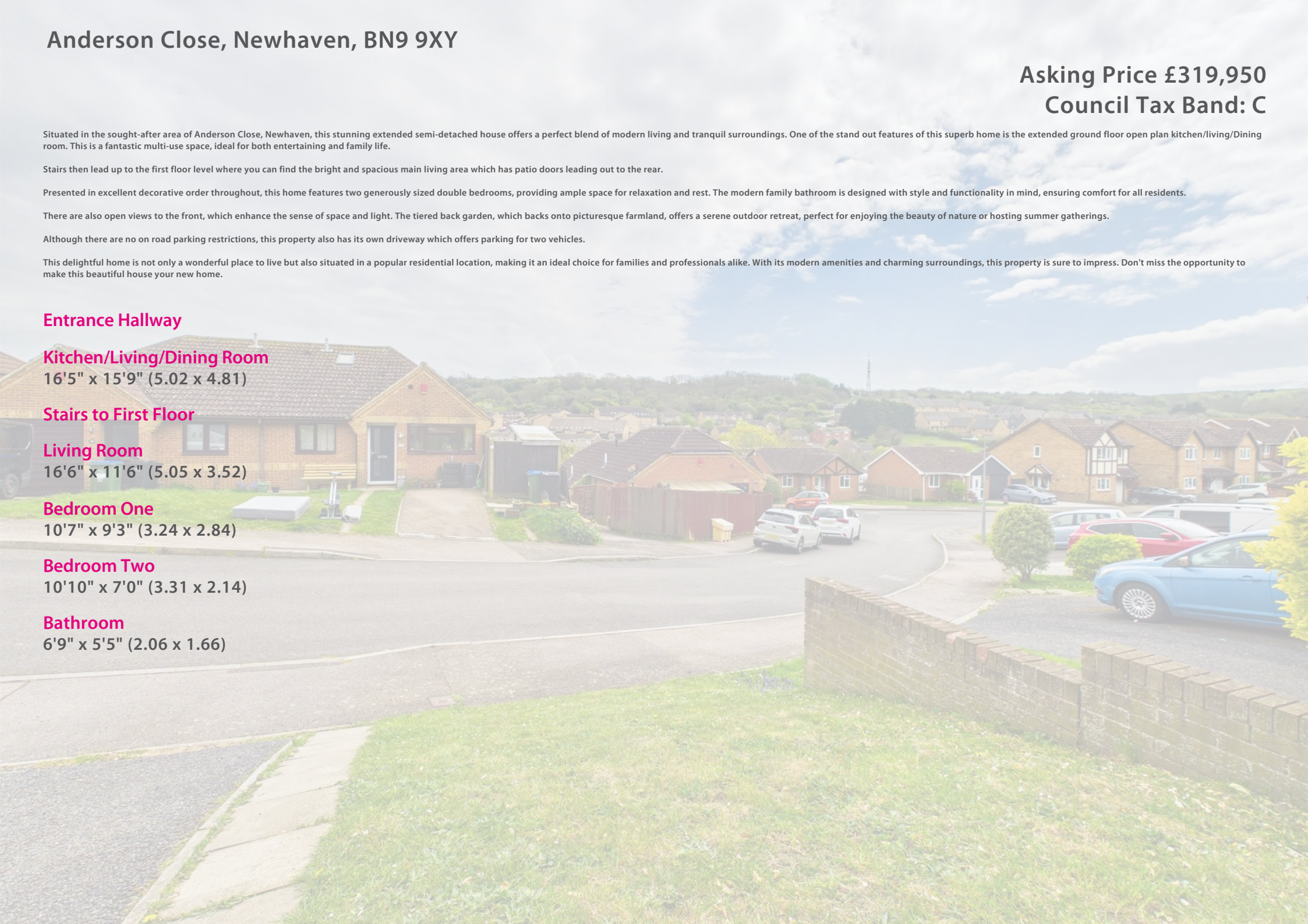
10'7" x 9'3" (3.24 x 2.84)

Bedroom Two

10'10" x 7'0" (3.31 x 2.14)

Bathroom

6'9" x 5'5" (2.06 x 1.66)





206 South Coast Road, Peacehaven, East
Sussex, BN10 8JP
01273 830 987
bnsales@localagent.co.uk





Ground Floor



Floor 1



Approximate total area^m

785 ft²

72.7 m²

(1) Excluding balconies and terraces

Calculations reference the RICS IPMS 3C standard. Measurements are approximate and not to scale. This floor plan is intended for illustration only.

GIRAFFE360