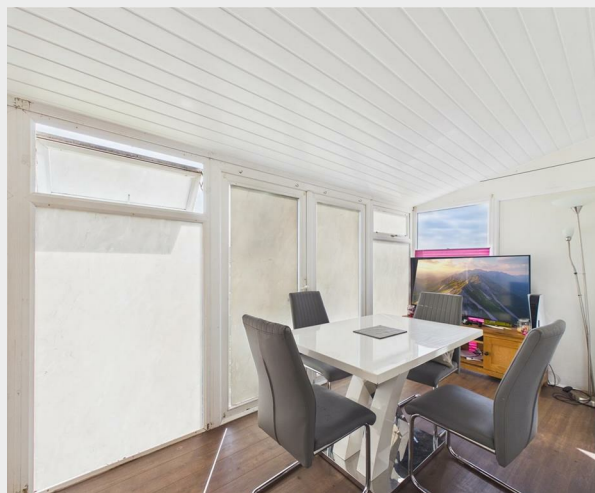


1 Aquarius Close, 2 Keymer Avenue, Peacehaven,
BN10 8NE
Asking Price £325,000



This charming house on Keymer Avenue is a wonderful opportunity for anyone looking to embrace the coastal lifestyle in Peacehaven as it boasts both stunning views and modern amenities too.

As you enter, you are welcomed into a bright and airy entrance hall, here you will find access to all principle rooms and stairs which rise to the first floor. The living room boasts south-facing patio doors, allowing natural light to flood the space while providing breathtaking views of the sea. The modern refitted kitchen is a chef's delight, featuring contemporary fittings and ample storage, making it perfect for meal preparation.

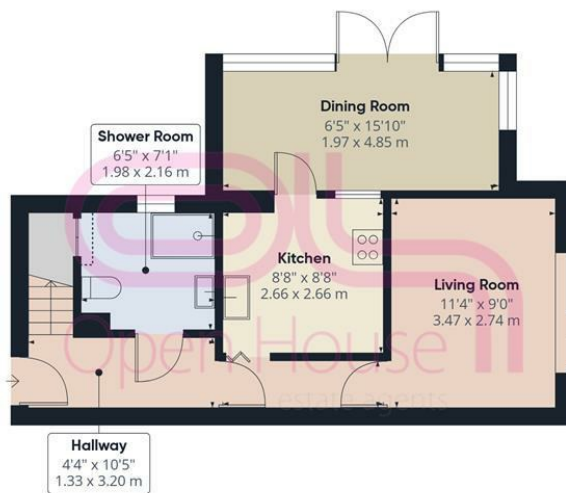
Close by is the dining area, which also features sea views and is perfect for entertaining guests or enjoying family meals. Concluding the ground floor is the modern shower room/wc.

The first floor consists of three bedrooms, two doubles and a single. The main bedroom is a true highlight, offering beautiful sea views that can be enjoyed from the comfort of your bed. Completing this floor is a handy wc.

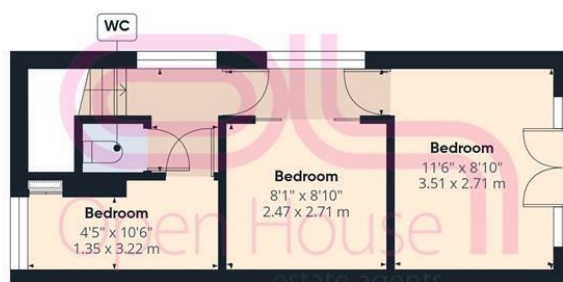
Finally, outside you will find the the south-facing side garden which is a tranquil space to relax and soak up the sun, all while being treated to some lovely sea views.



206 South Coast Road
Peacehaven
East Sussex
BN10 8JP
01273 830 987
bnsales@localagent.co.uk



Ground Floor



Floor 1



Approximate total area¹⁾

712 ft²
66 m²

Reduced headroom

2 ft²
0.2 m²

(1) Excluding balconies and terraces

Reduced headroom
..... Below 5 ft/1.5 m

Calculations reference the RICS IPMS 3C standard. Measurements are approximate and not to scale. This floor plan is intended for illustration only.

GIRAFFE360

