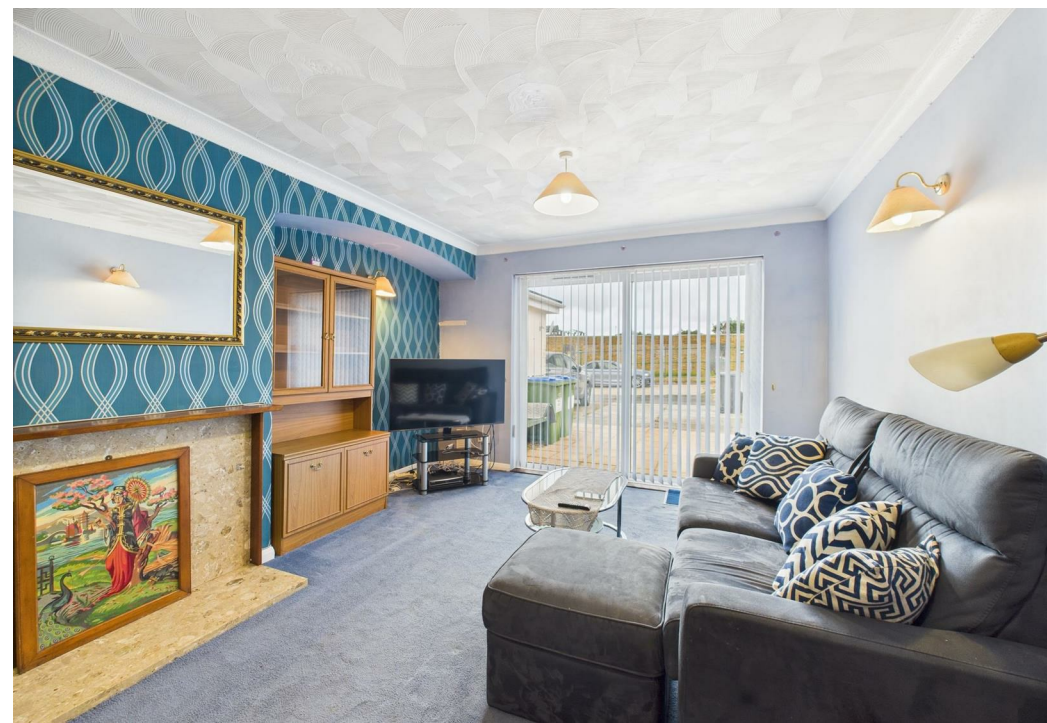
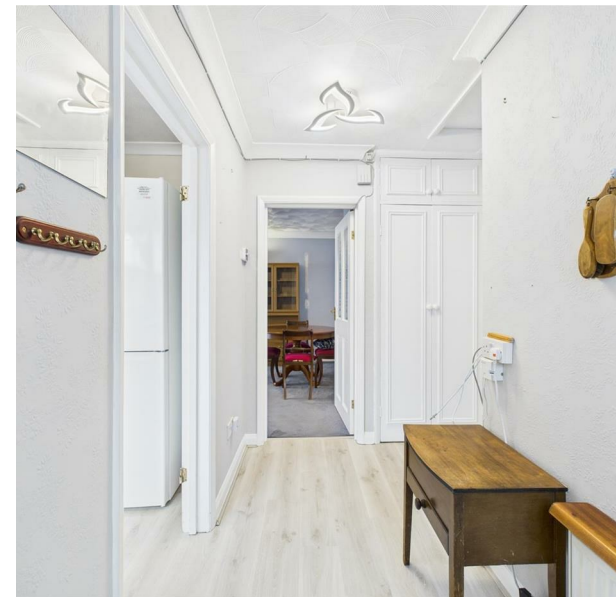


**Lincoln Avenue, Peacehaven, BN10 7JU**

**Asking Price £325,000**

**Council Tax Band: C**





This charming semi-detached bungalow presents an excellent opportunity for those seeking a comfortable and convenient home. Offered with no onward chain, this property is ideally situated, just a stone's throw from the bustling South Coast Road, ensuring easy access to local amenities and the stunning coastline.

Upon entering, you will be greeted by a generous west-facing lounge and dining area, which provides ample space for both relaxation and entertaining. This inviting room is perfect for accommodating lounge furniture as well as a dining table and chairs, making it a versatile space for family gatherings or quiet evenings in.

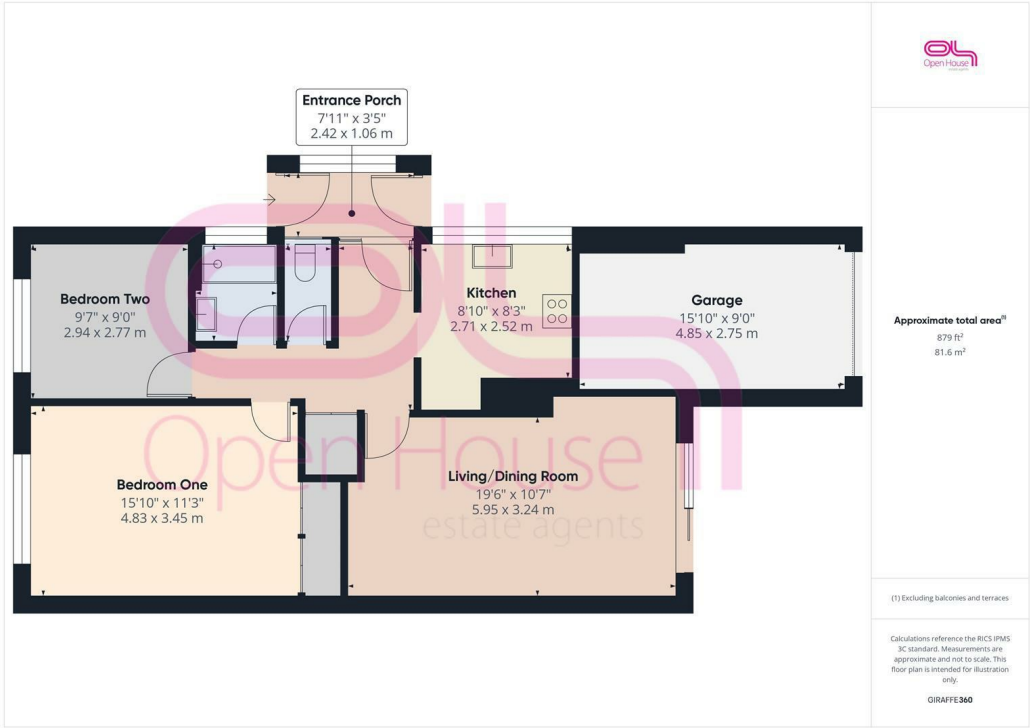
The fitted kitchen is a practical delight, boasting plenty of storage, extensive work surfaces, and designated spaces for appliances, catering to all your culinary needs. The bungalow features two well-proportioned double bedrooms, with the master bedroom being particularly spacious, offering a peaceful retreat at the end of the day.

Completing the interior are a shower room and a separate wc, providing convenience for residents and guests alike. Outside, the property boasts a secluded, low-maintenance rear garden, perfect for enjoying the outdoors without the burden of extensive upkeep. Additionally, there is a garage with a private drive, providing parking for a number of vehicles.

This bungalow is an ideal choice for those looking for a comfortable home in a prime location, combining spacious living with the ease of single-storey accommodation. Don't miss the chance to make this lovely property your own.



206 South Coast Road, Peacehaven, East  
Sussex, BN10 8JP  
01273 830 987  
bnsales@localagent.co.uk



Energy Efficiency Rating		
	Current	Potential
Very energy efficient - lower running costs		
(92 plus) A		
(81-91) B		
(69-80) C		
(55-68) D		
(39-54) E		
(21-38) F		
(1-20) G		
Not energy efficient - higher running costs		
England & Wales	EU Directive 2002/91/EC	