

Gorham Way, Telscombe Cliffs, Peacehaven, BN10 7BA

Asking Price £450,000

Council Tax Band: D



Located in Gorham Way, Telscombe Cliffs, this charming three-bedroom bungalow offers a unique opportunity for those seeking a home with potential. The property boasts a spacious reception room, perfect for entertaining or relaxing with family. The three well-proportioned bedrooms provide ample space for comfortable living, while the bathroom is conveniently located to serve the household.

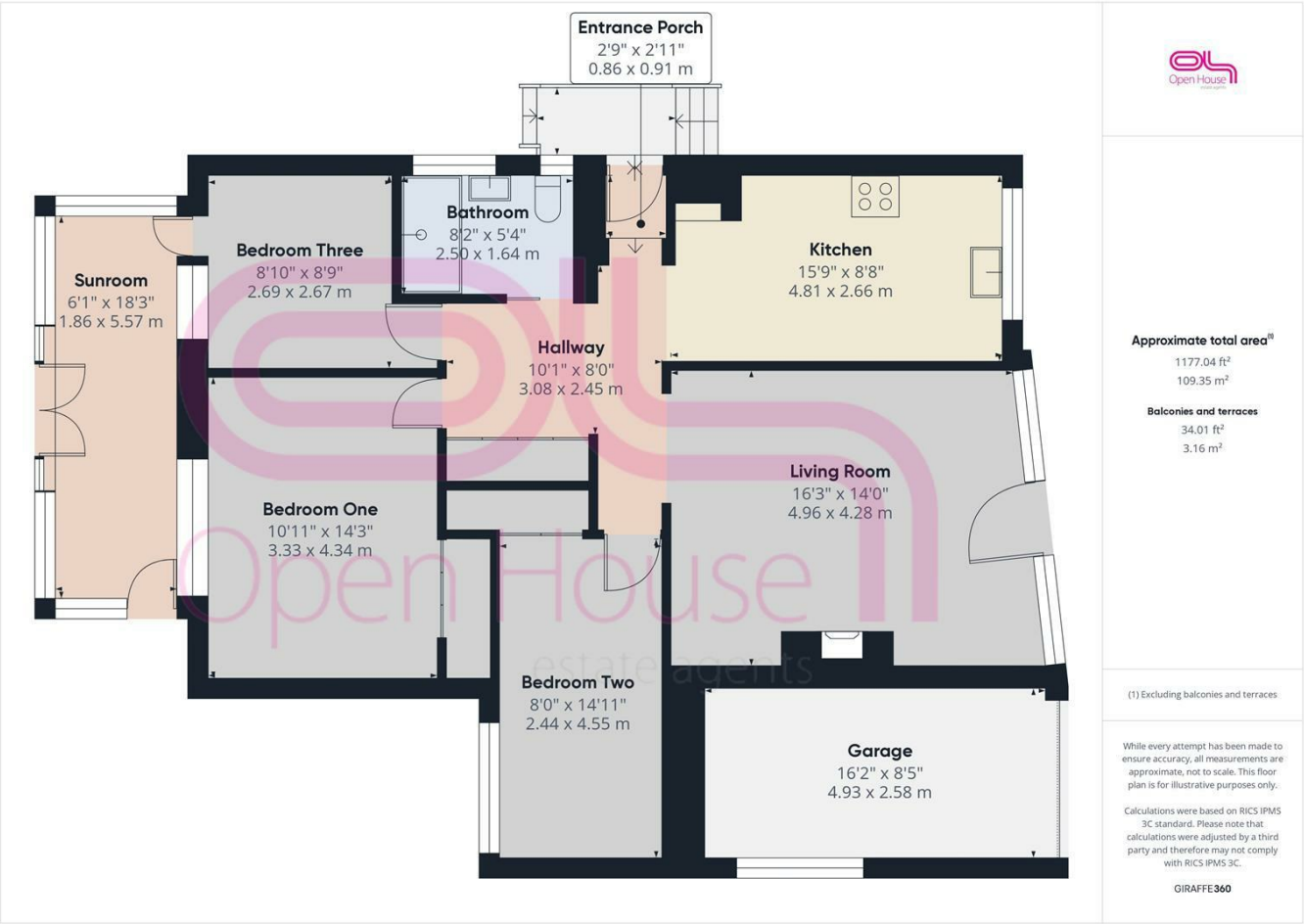
One of the standout features of this residence is its stunning location, situated opposite open fields that provide a serene backdrop and delightful views down towards the sea. This tranquil setting is ideal for nature lovers and those who appreciate the beauty of the outdoors.

While the property is in need of modernisation, it presents a blank canvas for buyers to create their dream home. The spacious accommodation allows for various design possibilities, making it an exciting project for those with a vision. Additionally, the property comes with the advantage of vacant possession, allowing for a smooth transition into your new home.

Parking is a breeze with space for two vehicles, and the inclusion of a garage adds further convenience. This bungalow is not just a property; it is a chance to embrace a lifestyle in a sought-after location. With its potential and stunning surroundings, this home is sure to attract interest from those looking to invest in a property that they can truly make their own. Don't miss the opportunity to view this delightful house and envision the possibilities it holds.



206 South Coast Road, Peacehaven, East
Sussex, BN10 8JP
01273 830 987
bnsales@localagent.co.uk



Energy Efficiency Rating		
	Current	Potential
Very energy efficient - lower running costs		
(92 plus) A		
(81-91) B		78
(69-80) C		
(55-68) D	60	
(39-54) E		
(21-38) F		
(1-20) G		
Not energy efficient - higher running costs		
England & Wales	EU Directive 2002/91/EC	