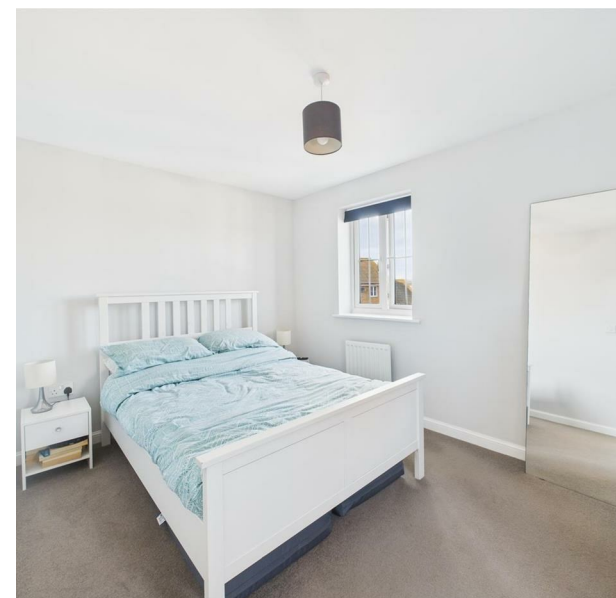


Montreal Close, Peacehaven, BN10 8FG

Asking Price £375,000

Council Tax Band: D





We are DELIGHTED to present this SPACIOUS townhouse located in the highly SOUGHT AFTER development of Montreal Close, Peacehaven. This STUNNING property boasts one/two generous reception rooms, providing versatility along with ample space for both relaxation and entertaining. With three/four well-proportioned bedrooms, it is perfect for families or those seeking extra room for guests.

The house features two modern bathrooms, including an en suite, ensuring convenience and comfort for all residents. The well-presented kitchen is equipped with fitted appliances, making it a joy to cook and dine in.

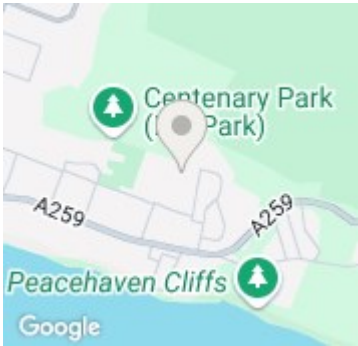
Step outside to discover a family friendly garden with a charming sheltered seating area on the terrace, ideal for enjoying the fresh air and sunshine. The property also benefits from off-street parking and a garage which is located at the rear, providing secure and convenient access for your vehicles.

The first-floor lounge is enhanced by sunny Juliet balconies, allowing natural light to flood the space. This townhouse is not only a home but a lifestyle, situated in a vibrant community that is perfect for those looking to enjoy the best of Peacehaven living.

This property is a wonderful opportunity for anyone seeking a comfortable and stylish home in a desirable location. Do not miss the chance to make this lovely townhouse your own.



206 South Coast Road, Peacehaven, East  
Sussex, BN10 8JP  
01273 830 987  
bnsales@localagent.co.uk



Energy Efficiency Rating		
	Current	Potential
Very energy efficient - lower running costs		
(92 plus) A		
(81-91) B		
(69-80) C		
(55-68) D		
(39-54) E		
(21-38) F		
(1-20) G		
Not energy efficient - higher running costs		
England & Wales		EU Directive 2002/91/EC