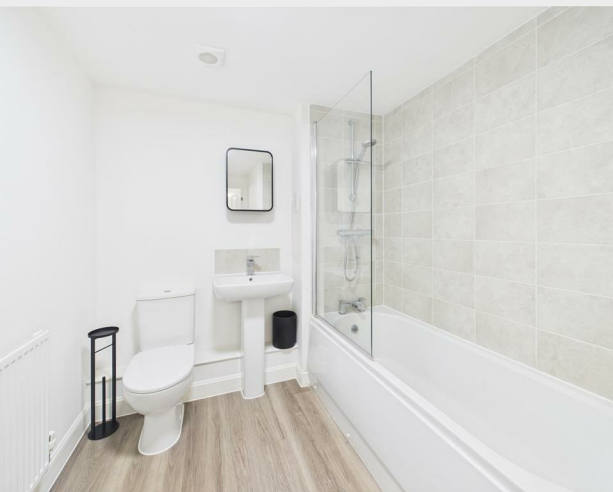


Flat 5, Skylark Avenue, Peacehaven, BN10 8GF  
Leasehold  
Asking Price £210,000



**NO CHAIN!** Located on Skylark Avenue within the **POPULAR** Chalkers Rise development, this **NEARLY NEW** one bedroom apartment offers a contemporary living experience, perfect for individuals or couples seeking a comfortable home.

The standout feature is the bright and airy reception room that seamlessly combines a modern kitchen and lounge area. The south-facing aspect ensures that the space is flooded with natural light, creating a warm and inviting atmosphere throughout the day. The kitchen is well-equipped, making it ideal for both cooking and entertaining.

The flat features a well-appointed bedroom with built-in storage, providing a peaceful retreat at the end of the day. The bathroom is stylish and functional, designed to meet all your needs.

Additionally, the property offers allocated parking and has ample visitor bays. Moreover, the flat is conveniently located close to transport links, offering easy access to both Brighton and Eastbourne, making it an excellent choice for commuters or those who enjoy exploring the vibrant local culture.

This spotless apartment is a fantastic opportunity for anyone looking to settle in a modern and well-connected environment. Don't miss your chance to make this delightful flat your new home.

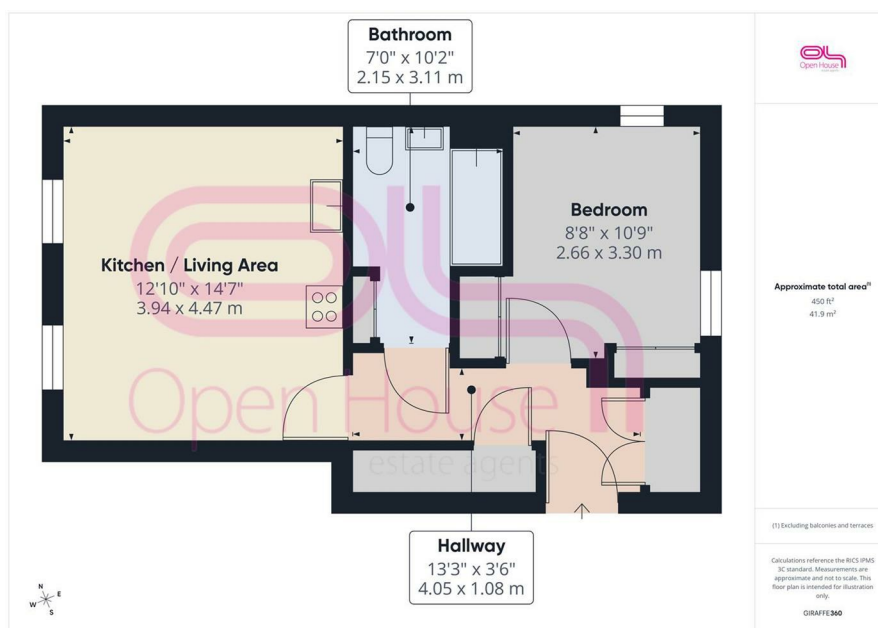


**206 South Coast Road  
Peacehaven  
East Sussex  
BN10 8JP**

**01273 830 987**

**bnsales@localagent.co.uk**

**www.openhousebrighton.co.uk**



**Kitchen/Living Area**  
12'11" x 14'7" (3.94 x 4.47)

**Bedroom**  
8'8" x 10'9" (2.66 x 3.30)

**Bathroom**  
7'0" x 10'2" (2.15 x 3.11)

**Hallway**  
13'3" x 3'6" (4.05 x 1.08)

